

Little F. -

Prelude

A handwritten musical score for a piece titled "Little F. - Prelude". The score is written on 12 staves, with the first two staves containing the title and the word "Prelude". The music is written in a single system, with each staff containing a line of music. The notation is dense and includes various rhythmic values, accidentals, and dynamic markings. The piece is written in a key signature of one sharp (F#) and a time signature of 4/4. The notation is highly detailed, with many slurs and ties, suggesting a complex and expressive piece. The handwriting is clear and legible, with some corrections and erasures visible. The overall appearance is that of a professional manuscript or a well-prepared student score.

A page of handwritten musical notation for a piece titled "Allemande". The score is written on ten systems of five staves each. The notation is dense and includes various rhythmic values, accidentals, and dynamic markings. The word "Allemande" is written in a cursive hand at the beginning of the third system. The piece concludes with a double bar line and a fermata on the final note of the bottom staff.

*Allemande*

*Caricature*

The first staff of handwritten musical notation for the 'Caricature' section. It begins with a treble clef, a key signature of one sharp (F#), and a common time signature (C). The notation is dense with eighth and sixteenth notes, featuring many beamed notes and slurs.

The second staff of handwritten musical notation, continuing the 'Caricature' section with similar rhythmic complexity and note density.

The third staff of handwritten musical notation, showing a continuation of the intricate melodic and rhythmic patterns.

The fourth staff of handwritten musical notation, maintaining the fast-paced and detailed notation.

The fifth staff of handwritten musical notation, with a mix of eighth and sixteenth notes and various rests.

The sixth staff of handwritten musical notation, featuring a variety of note values and slurs.

The seventh staff of handwritten musical notation, showing a continuation of the complex rhythmic structure.

The eighth staff of handwritten musical notation, with a focus on rapid sixteenth-note passages.

The ninth staff of handwritten musical notation, continuing the dense and fast-moving musical texture.

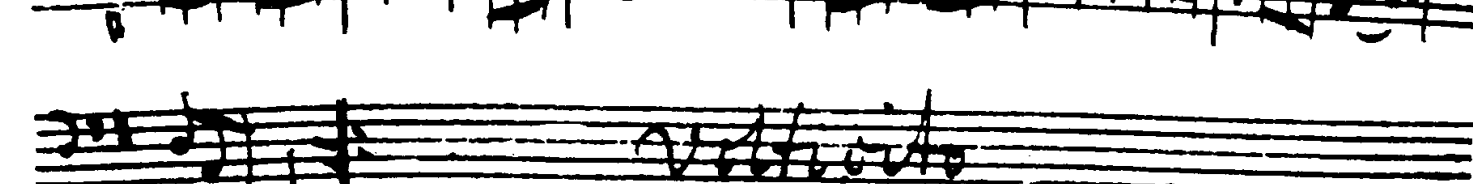
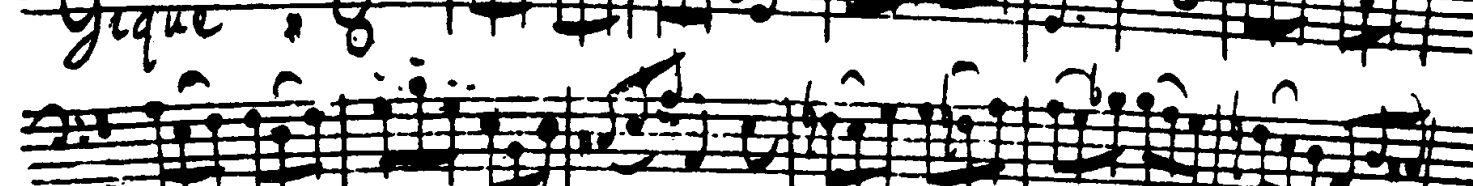
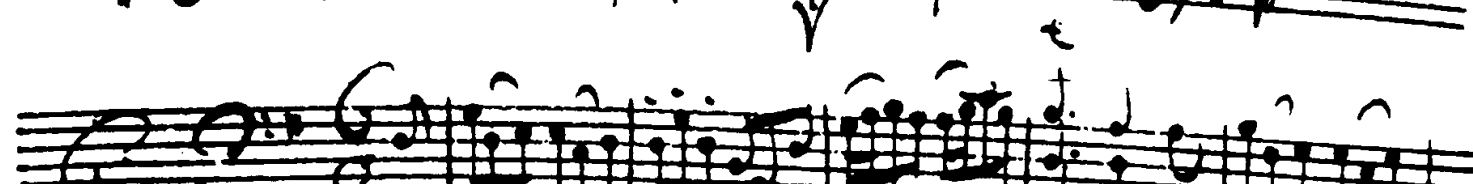
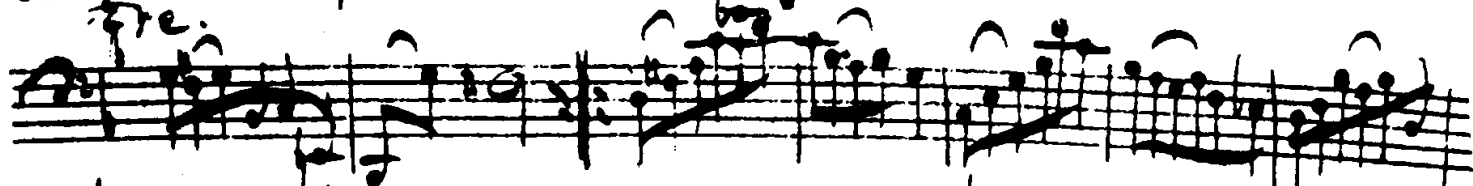
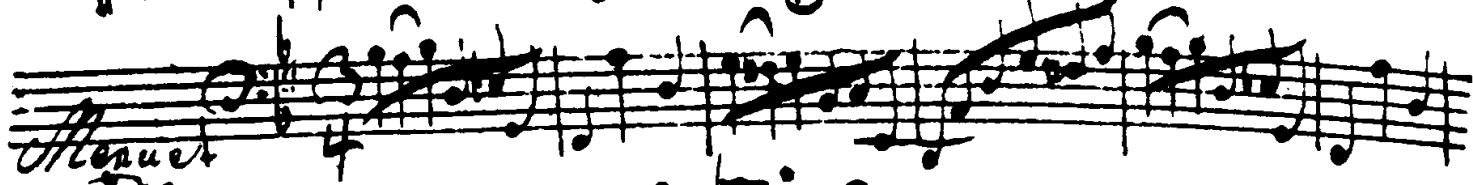
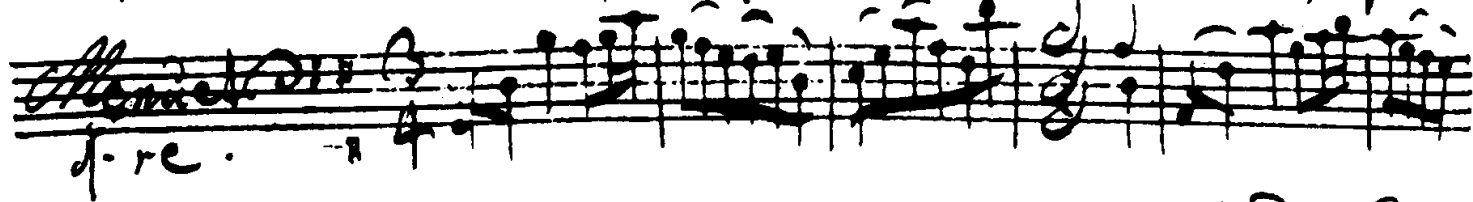
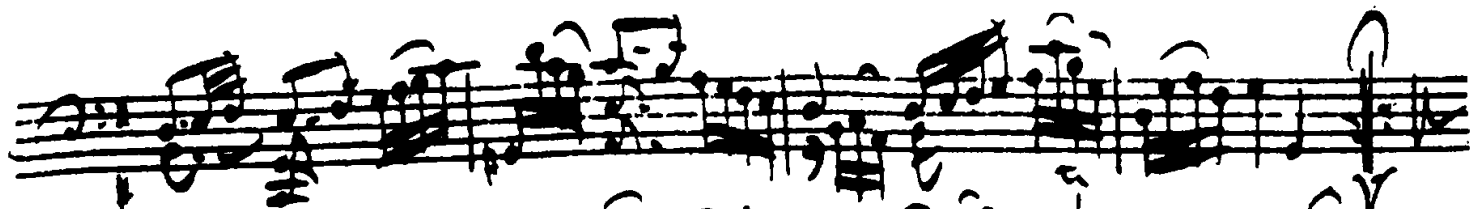
The tenth staff of handwritten musical notation, showing a slight change in rhythmic pattern.

*Sarabande*

The first staff of handwritten musical notation for the 'Sarabande' section. It begins with a treble clef, a key signature of one sharp (F#), and a common time signature (C). The notation is more spacious than the 'Caricature' section, with a focus on eighth and sixteenth notes.

The second staff of handwritten musical notation for the 'Sarabande' section, featuring a mix of note values and rests.

The third staff of handwritten musical notation for the 'Sarabande' section, concluding the piece with a final cadence.



The first system of the manuscript consists of four staves of handwritten musical notation. The notation is dense and features a variety of rhythmic values, including eighth and sixteenth notes, as well as rests. The handwriting is fluid and characteristic of a composer's working draft.

*Little Écrite*

The second system of the manuscript consists of ten staves of handwritten musical notation. The first staff of this system begins with the word "Prelude" written in a cursive hand. The notation continues with complex rhythmic patterns and melodic lines across the remaining nine staves.